



Flat 3, 54 Station Lane

, Hornchurch, RM12 6NB

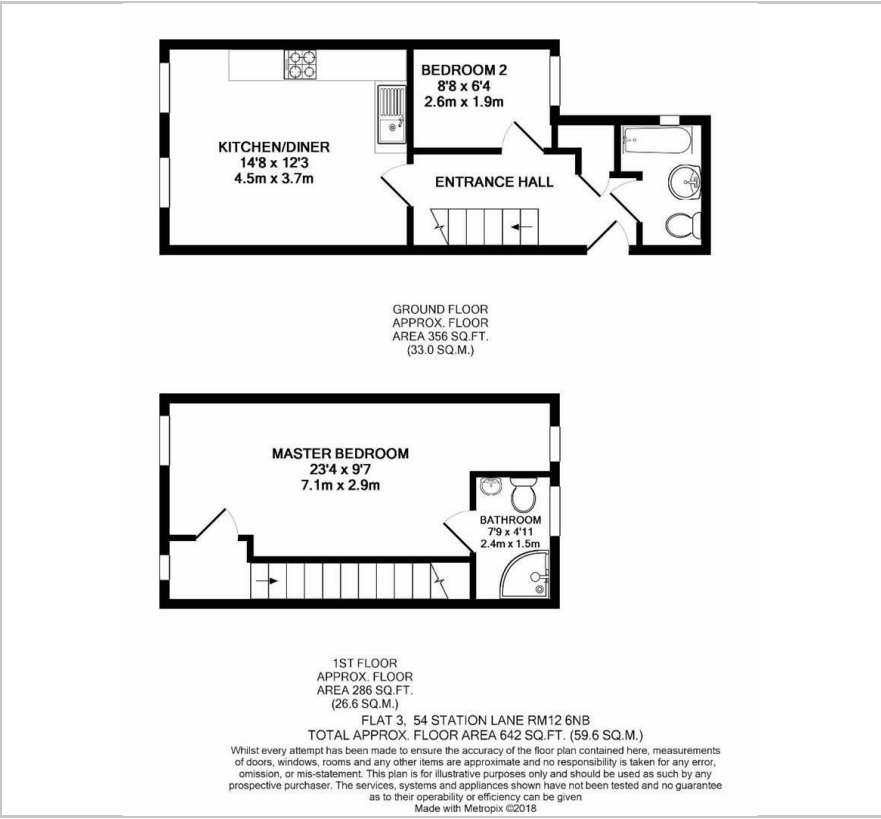
£1,750



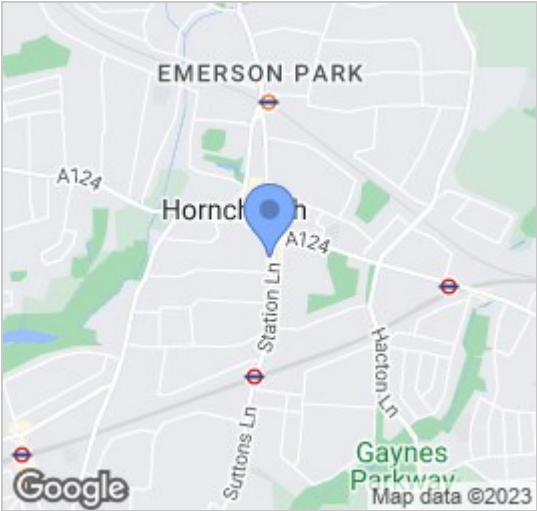
null



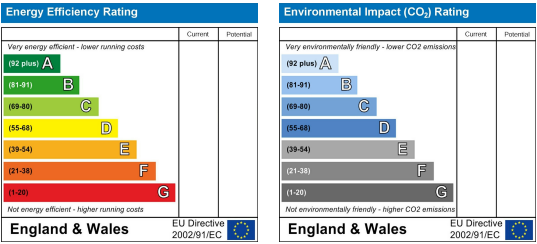
Floor Plan



Area Map



Energy Efficiency Graph



Viewing

Please contact our Sunshine Estates Office on 020 8066 5055 if you wish to arrange a viewing appointment for this property or require further information.

We are pleased to present this 2 bedroom split level flat centrally located in Havering close to lots of shops and easy access to public transport.

The flat consist of an open plan kitchen, 2 bedrooms and 2 bathrooms.

Please see floor plans attached.

Available from 05.06.23. Please contact us today to arrange a viewing.

These particulars, whilst believed to be accurate are set out as a general outline only for guidance and do not constitute any part of an offer or contract. Intending purchasers should not rely on them as statements of representation of fact, but must satisfy themselves by inspection or otherwise as to their accuracy. No person in this firms employment has the authority to make or give any representation or warranty in respect of the property.